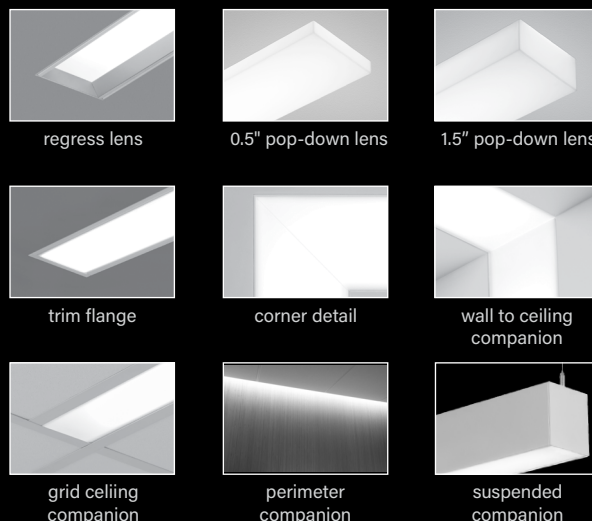


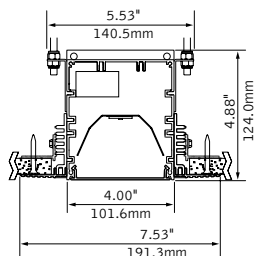
# Seem® 4 Drywall/Hard/Specialty Ceiling

LED



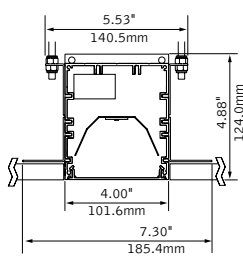
## DIMENSIONAL DATA

### Asymmetric, Batwing, Flush Lens Trimless mud-in



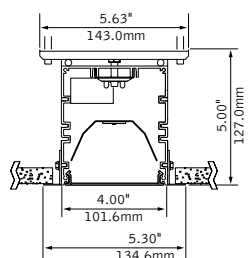
note: 0.375"min - 2.125"max ceiling thickness

### Hard surface

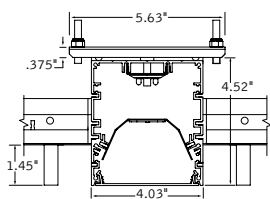


note: 0.375"min - 2.125"max ceiling thickness

### Trim flange



### No Flange

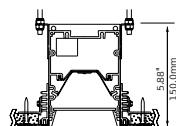


### Specialty ceiling examples

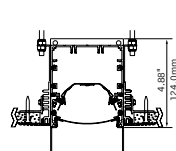


## Additional Shielding Options

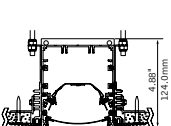
### Regress lens



### 1.5" Pop-Down lens



### 0.5" Pop-Down lens



## FEATURES

Extruded aluminum 4" aperture recessed slot LED integrates with drywall or hard ceilings or walls in a variety of mounting styles for a clean, unobtrusive aesthetic.

Individual units and continuous runs in 1" increments.

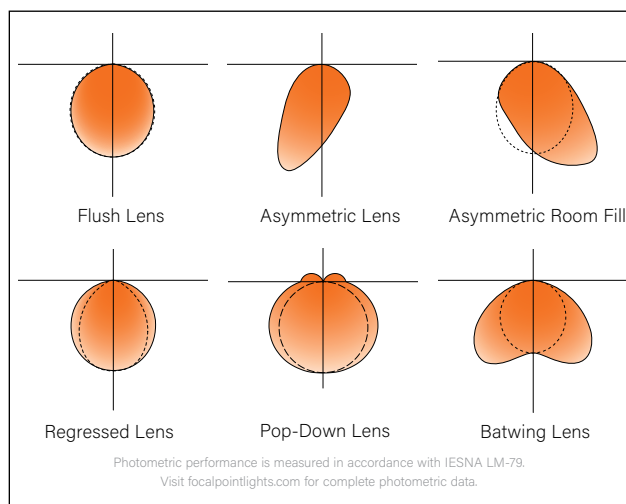
Available in flush, asymmetric, asymmetric room fill, batwing, regress, 0.5" or 1.5" pop-down lens.

Tunable White: Supports human activity, well-being, and preferences with a light quality that evolves throughout the day.

Connected Solutions: Integrates with wired and wireless building lighting control systems.

PoE compatible: Integrates with Power over Ethernet lighting systems via standard, low-voltage wires.

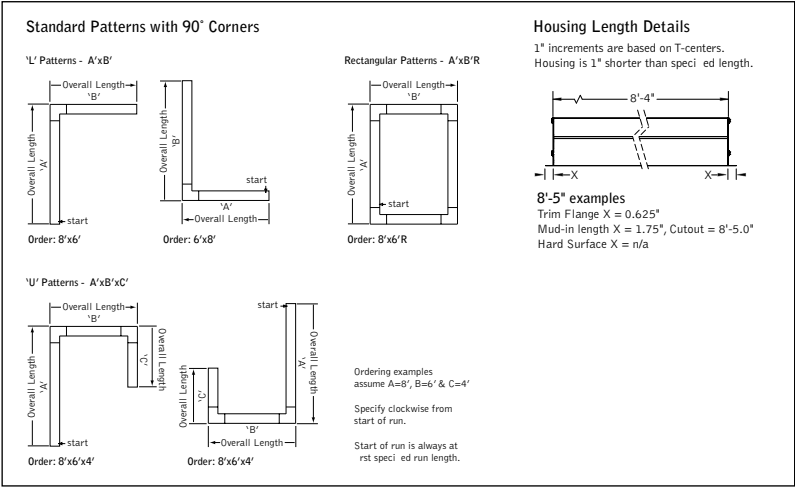
## DISTRIBUTIONS



fixture:

project:

DETAILS



4' PERFORMANCE CHART

Lumen Output	Nominal Lumens	BW		FL		AS		AF	
		Tested System Watts	LPW	Tested System Watts	LPW	Tested System Watts	LPW	Tested System Watts	LPW
275LF	1100	8.8	125	9.1	121	8.5	130	8.6	128
375LF	1500	11.3	133	11.7	129	10.8	138	11	137
625LF	2500	19	131	19.9	126	18.3	137	18.5	135
875LF	3500	27	130	27.9	125	25.9	135	26.2	133
1000LF	4000	31.1	129	32.2	124	29.8	134	30.2	132
1125LF	4500	35.4	127	36.6	123	33.9	133	34.4	131
1250LF	5000	39.8	126	41.2	121	38.1	131	38.6	129

Based on 3500K, 80 CRI, 4' lengths. Lumen multiplier: 90+ CRI = 0.87. Lumen output may vary +/- 5%. Actual wattage may vary +/- 5%.

4' PERFORMANCE CHART - REGRESS

Lumen Output	Nominal Lumens	SR		SRXP	
		Tested System Watts	LPW	Tested System Watts	LPW
275LF	1100	9.4	117	8.7	127
375LF	1500	12.5	120	11.1	135
625LF	2500	21.1	118	18.7	134
875LF	3500	30	117	26.5	132
1000LF	4000	34.6	116	30.6	131
1125LF	4500	39.5	114	34.8	129
1250LF	5000	44.4	113	39	128

Based on 3500K, 80 CRI, 4' lengths. Lumen multiplier: 90+ CRI = 0.87. Lumen output may vary +/- 5%. Actual wattage may vary +/- 5%.

4' PERFORMANCE CHART - POP-DOWN

Lumen Output	Nominal Lumens	0.5"		1.5"	
		Tested System Watts	LPW	Tested System Watts	LPW
275LF	1100	11	100	11.9	93
375LF	1500	14.7	102	15.8	95
625LF	2500	25	100	27	93
750LF	3000	30.3	99	32.7	92
875LF	3500	35.7	98	38.6	91
1000LF	4000	41.3	97	44.7	89

Based on 3500K, 80 CRI, 4' lengths. Lumen multiplier: 90+ CRI = 0.87. Lumen output may vary +/- 5%. Actual wattage may vary +/- 5%.



Options in orange qualify for the Quickship program. 1000' total, 48" maximum per pattern section. Refer to Quickship Guide for complete details including EM/EC options.

Focal Point LLC reserves the right to change specifications for product improvement without notification.

STANDARD WHITE

Luminaire Series

Seem 4 LED FSM4L

Shielding

Asymmetric Lens AS

Asymmetric Room Fill AF

Batwing Lens BW

Flush Satin Lens FL

0.5" Pop-Down Lens (1000LF max.) PD05

1.5" Pop-Down Lens (1000LF max. individual units only) PD15

Regress Lens\* SR

Regress High Performance Lens\* SRXP

(Ceiling applications only)

Lumen Output

275 Lumens per foot (Not available with LH1) 275LF

375 Lumens per foot (Not available with LH1) 375LF

625 Lumens per foot (BW, FL & SR 3' min. individual units only with LH1. SRXP 4' min. individual units only with LH1.) 625LF

750 Lumens per foot (Pop-Down Lenses only) 750LF

875 Lumens per foot (SR & SRXP 3' min. individual units only with LH1.) 875LF

1000 Lumens per foot 1000LF

1125 Lumens per foot 1125LF

1250 Lumens per foot 1250LF

Color Temperature

2700K, 80+ CRI or 90+ CRI 27K or 927K

3000K, 80+ CRI or 90+ CRI 30K or 930K

3500K, 80+ CRI or 90+ CRI 35K or 935K

4000K, 80+ CRI or 90+ CRI 40K or 940K

Circuits & Zones

1 Circuit, non-emergency 1C

Consult Ordering Guide on page 6 for multiple circuiting and zoning options

Voltage

120/277 UNV Volt UNV

Low Voltage LV

Control System & Dimming Level

0-10V - 10% Dimming LD1

0-10V - 1% Dimming L1

Low Voltage, PoE compatible LVN

(No driver. Not available with EM or EC. LV Voltage only.)

Lutron Hi-Lume EcoSystem (LDE1) - 1% Dimming (625LF min.) LH1

DALI 1% Dimming (1000LF max.) D11

Wattstopper Fixture Sensor\*\* LMFS1

Low Density - 1% Dimming

Wattstopper Fixture Sensor\*\* LMFS1

High Density - 1% Dimming

Lutron Athena Wireless Sensor\*\* LAWS

Enlightened Smart Sensor - 1% Dimming\*\* ENL1

WaveLinux Pro - 1% Dimming\*\* WLXP

(XF1, XF2 and XFF only)

\*\* (XF1, XF2 and XFF only. 3' min. length. 7' min. with ECD/ECM. Not available with Pop-Down Lenses. See sensor layout guide)

Ceiling Configuration

No Flange for specialty ceilings NF

(Ex. slat, panel, cloud systems. 3' minimum with Lutron.)

Trim Flange Drywall (3' minimum with Lutron) TF

Trim Flange Wood (3' minimum with Lutron) TFW

Mud-in Trimless, pre-set for 1/2" Drywall XF1

Mud-in Trimless, pre-set for 5/8" Drywall XF2

Mud-in Trimless, set thickness in field XFF

(Mounting equipment assembled in field)

Non-Drywall Hard Surface XFN

Hard Surface, Wood XFW

Factory Options

(See page 6 for ordering details for DC, EC, EM & ECD.)

Chicago Plenum (Not available with Flex Whip) CP

Daylight Circuit \_DC

Emergency Circuit \_EC

Emergency Battery Pack† \_EM

Emergency Control Device† \_ECD

† (4' minimum. 6' minimum with patterns. 120/277 Volt only. Not available at corners.)

6' New York City Flex Whip 120V or 277V FNY1 or FNY2

6' Flex Whip FW

Finish

Matte White Housing WH

Luminaire Length

Specify luminaire/row length in 1" increments \_ft \_in

(2' minimum. Housing length is 1" shorter than specified. Leave blank for patterns.)

Pattern Options

(4' min. length. Not available with Pop-Down Lenses. Consult factory for other pattern options.)

'L' pattern A' x B'

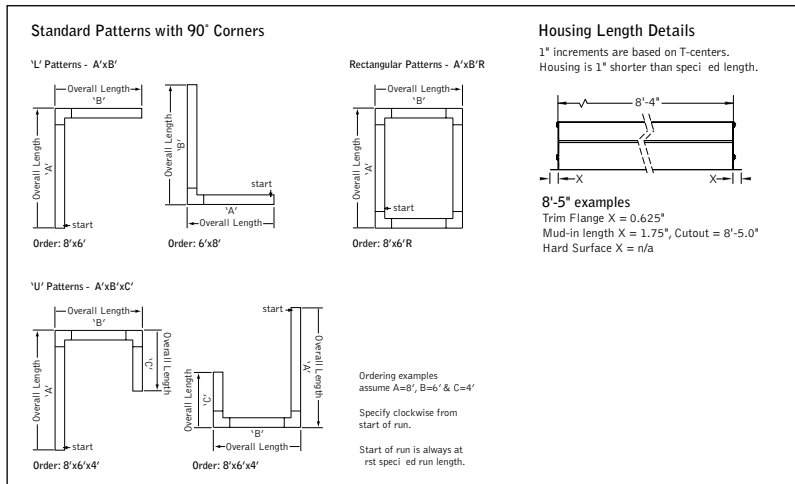
'U' pattern A' x B' x C'

Rectangular pattern A' x B' R

fixture:

project:

## DETAILS



## TW 4' PERFORMANCE CHART

Lumen Output	Nominal Lumens	Tested System Watts	LPW	
			BW	FL
275LF	1100	13.30	87.3	83.2
375LF	1500	17.34	90.8	86.5
625LF	2500	27.84	94.0	89.5
875LF	3500	37.22	98.9	94.2
1000LF	4000	42.39	99.2	94.4
1125LF	4500	50.27	93.9	89.4

Based on 2700K, 80CRI, 4' lengths. Lumen output may vary +/- 5%. Actual wattage may vary +/- 5%.

## TW 4' PERFORMANCE CHART - REGRESS

Lumen Output	Delivered Lumens	Tested System Watts	LPW	
			SR	SRXP
275LF	1100	14.72	74.4	88.6
375LF	1500	19.36	77.5	92.3
625LF	2500	31.47	79.6	94.8
875LF	3500	42.01	83.4	99.4
1000LF	4000	50.68	79.2	94.3

Based on 2700K, 80CRI, 4' lengths. Lumen output may vary +/- 5%. Actual wattage may vary +/- 5%.

## TW 4' PERFORMANCE CHART - POP-DOWN

Lumen Output	Nominal Lumens	0.5"		1.5"	
		Tested System Watts	LPW	Tested System Watts	LPW
275LF	1100	17.14	64.7	16.33	67.3
375LF	1500	22.79	66.5	21.58	70.0
625LF	2500	35.49	70.6	33.96	73.8
750LF	3000	42.39	70.8	40.28	74.5

Based on 2700K, 80CRI, 4' lengths. Lumen output may vary +/- 5%. Actual wattage may vary +/- 5%.

### Lumen Multipliers

CRI	Multiplier
80+	1.00
90+	0.89

### Wattage Multipliers

CCT	Multiplier
2700K	1.00
3000K	0.92
3500K	0.88
4000K	0.86
5000K	0.85
5700K	0.87
6500K	0.90



## TUNABLE WHITE

### Luminaire Series

Seem 4 LED FSM4L

### Shielding

Batwing Lens BW

Flush Satin Lens FL

0.5" Pop-Down Lens (750LF max.) PD05

1.5" Pop-Down Lens (750LF max. individual units only) PD15

Regress Lens\* SR

Regress High Performance Lens\* SRXP

\*(1000LF max. Ceiling applications only)

### Lumen Output

275 Lumens per foot 275LF

(BW, FL, SR & SRXP 3' min. with DITW. SR, SRXP, PD05 & PD15 3' min. with LT1. FL & BW 4' min. with LT1.)

375 Lumens per foot 375LF

(BW, FL, SR & SRXP 3' min.)

625 Lumens per foot 625LF

750 Lumens per foot (Pop-Down Lenses only) 750LF

875 Lumens per foot 875LF

1000 Lumens per foot 1000LF

1125 Lumens per foot 1125LF

### Color Temperature

Tunable White: 2700-6500K, 80+ CRI 2765T

Tunable White: 2700-6500K, 90+ CRI 92765T

### Circuits & Zones

1 Circuit, non-emergency 1C

Consult Ordering Guide on page 6 for multiple circuiting and zoning options \_C\_Z\_DL

### Voltage

120/277 UNV Volt UNV

### Control System & Dimming Level

Lutron T-Series - 1% Dimming LT1

DALI 1% Dimming D1TW

(DT6 control. Requires two addresses, one for intensity & one for CCT tuning. Consult factory for DT8.)

Lutron Athena Wireless Sensor\*\* LAWS

Enlighted Smart Sensor - 1% Dimming\*\* ENL1

(\*\*Consult factory. Not available with Pop-Down lenses. See sensor layout guide)

### Ceiling Configuration

No Flange for specialty ceilings NF

(Ex. slat, panel, cloud systems. 3' minimum with Lutron.)

Trim Flange Drywall TF

(3' minimum with Lutron)

Trim Flange Wood TFW

(3' minimum with Lutron)

Mud-in Trimless, pre-set for 1/2" Drywall XF1

Mud-in Trimless, pre-set for 5/8" Drywall XF2

Mud-in Trimless, set thickness in field (Mounting equipment assembled in field) XFF

Non-Drywall Hard Surface XFN

Hard Surface, Wood XFW

### Factory Options

(See page 6 for ordering details for DC, EC, EM & ECD.)

Chicago Plenum CP

(Not available with Flex Whip)

Daylight Circuit \_DC

Emergency Circuit \_EC

Emergency Battery Pack† \_EM

Emergency Control Device† \_ECD

†(Consult factory.)

6' New York City Flex Whip 120V or 277V FNY1 or FNY2

6' Flex Whip FW

### Finish

Matte White Housing WH

### Luminaire Length

Specify luminaire/row length in 1" increments \_ft\_in

(2' minimum. Housing length is 1" shorter than specified. Leave blank for patterns.)

### Pattern Options

(4' min. length. Not available with Pop-Down Lenses. Consult factory for other pattern options.)

'L' pattern A' x B'

'U' pattern A' x B' x C'

Rectangular pattern A' x B' R

## SPECIFICATIONS

### LED System

Proprietary linear LED module incorporates premium LEDs on a robust platform to achieve excellent thermal management. LEDs are placed to promote a uniform appearance. Available in 2700K, 3000K, 3500K or 4000K with CRI>80 or CRI>90, 3 SDCM or Tunable White (2700K-6500K), CRI>80, >90. 3500K and 4000K with CRI>90 have a cyanosis observation index (COI) of 3.3 or less. LED modules and drivers are replaceable from below.

### Construction

One piece extruded aluminum housing. 20 Ga. steel end caps. Housing for new construction applications. XFW acceptable for use with wood, consult factory for Type IC availability. 2' unit weight: 12 lbs., 3' unit weight: 16 lbs., 4' unit weight: 20 lbs., 5' unit weight: 24 lbs.

### Optic

Asymmetric, Flush and Batwing lens extruded acrylic .085" thick with satin finish up to 8' continuous. Pop-Down lens extruded acrylic .06" thick with frosted finish, up to 8' continuous. Regress lens .118" thick acrylic lay-in lens. 22 Ga. reflector finished in High Reflectance White powder coat.

### Electrical

Luminaires are pre-wired with factory installed branch circuit wiring and over-molded quick connects. Standard 120-277V constant current driver includes 0-10V analog dimming. Power factor >.9. PoE compatible: Integrates with Power over Ethernet lighting systems via standard, low-voltage wires. PoE runs require an independent PoE node and power feed for each luminaire section.

### Emergency

Output - 10 watts for 90 minutes. Maximum mounting height: 19.2ft. Emergency Circuit with Connected Solutions (LMFS1, LMFS2, ENL1, WLXP) shipped standard with leads to connect UL924 compliant device, by others.

### Labels

UL and cUL listed. Suitable for Dry or Damp Locations, indoor use only.

### Finish

Polyester powder coat applied over a multi-stage pre-treatment.

### Lumen Maintenance

Reported: L70 > 61,000 hours  
L90 > 61,000 hours  
Calculated: L70 at > 480,000 hours  
L90 at > 128,000 hours  
(Derived from EPA TM-21 calculator. Based on typical conditions, consult factory for additional data.)

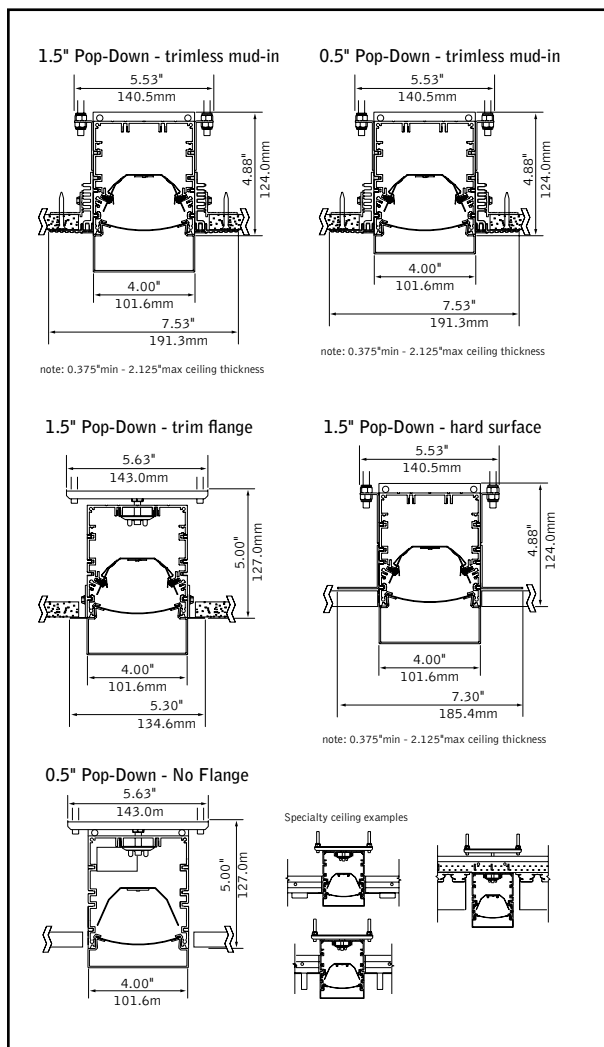
### Reliability

At Focal Point, our products are designed to stand the test of time. Each luminaire is engineered using superior components, manufactured with the utmost care and rigorously tested. Contact us for reliability data.

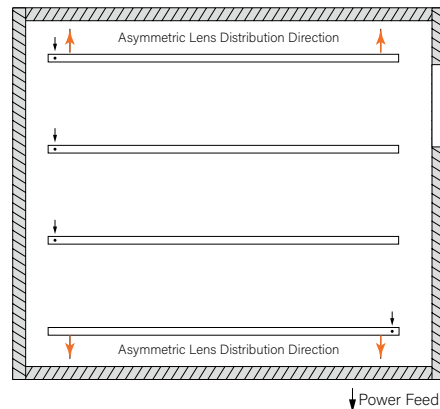
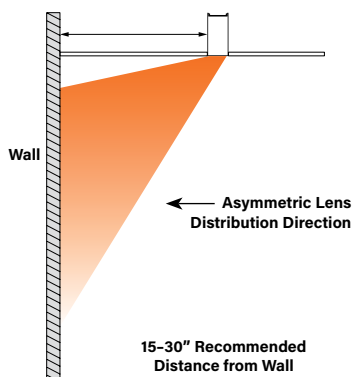
### Warranty

LED system rated for operation in ambient environments up to 25°C. 5-year limited warranty.

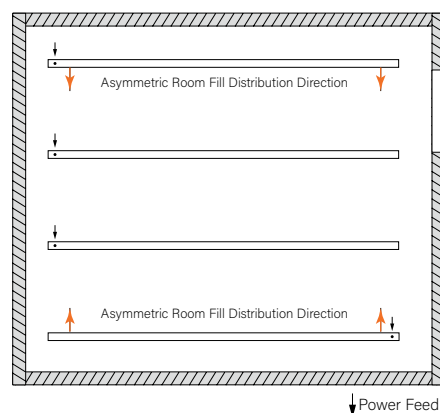
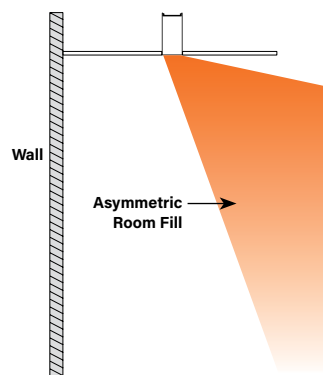
## ADDITIONAL DIMENSIONAL DATA




## DIRECT ASYMMETRIC Standard Application Example



## DIRECT ASYMMETRIC ROOM FILL Standard Application Example



Focal Point provides flexibility in meeting the needs of each project by integrating with several building lighting control systems. A variety of sensors, drivers and other components can be specified that allow the luminaires to communicate with wired and wireless networks. All zoning can be digitally reconfigured through the application software. Daylight harvesting, occupancy sensing, integration with HVAC systems, and individual controls enable the monitoring and modulating of light levels and temperature in order to save energy, reduce costs and maximize occupants' comfort. All Connected Solutions luminaires require a compatible building control system.†

Connected Solution	Ordering Code	Model #**	Protocol	Compatible Networks*	Occupancy & Daylight	Temperature Reporting	Communication to Luminaire	Drivers
 WATTSTOPPER <sup>®</sup> 	LMFS1	LMFS-601 & LMFI-111	DLM Wireless	DLM	Enabled	No	Wireless	<b>Advance by Signify</b>
	LMFSD	LMFS-601						<b>Optotronic by eldoLED (Dexal)</b>
 	WLXP	OEM-WAA	WaveLinx Wireless	WaveLinx Pro Trellix	Enabled	No	Wireless (WaveLinx Pro Wireless Area Controller)	<b>Advance by Signify</b>
 	D11	Specified Driver	DALI	Crestron Züm Wireless & SpaceBuilder	Enabled	No	Wired	<b>eldoLED ECOdrive</b>
	L11		0-10V					<b>Advance by Signify</b>
 	ENL1	SU-5E-IOT	Enlighted RF	Enlighted	Integrated	Yes	Wireless	<b>Advance by Signify</b>
 	LAWS	A-WN-D01-OCC-WH	DALI, 0-10V	Athena Wireless	Integrated	No	Wireless	<b>Advance by Signify</b>
	LH1	LDE1	EcoSystem	Quantum, Energi Savr Node, Energi TriPak	Enabled	No	Wired	<b>Lutron Hi-Lume</b>

\*Not all compatible networks may be listed. \*\*For performance data and additional control system details please visit the connected solutions manufacturer websites. Primary drivers are listed in **bold**. To specify a particular driver please consult factory.  
†Controls systems supplied by others.